

Rwandan Electricity Access Roll-Out Program

Intervention Summary

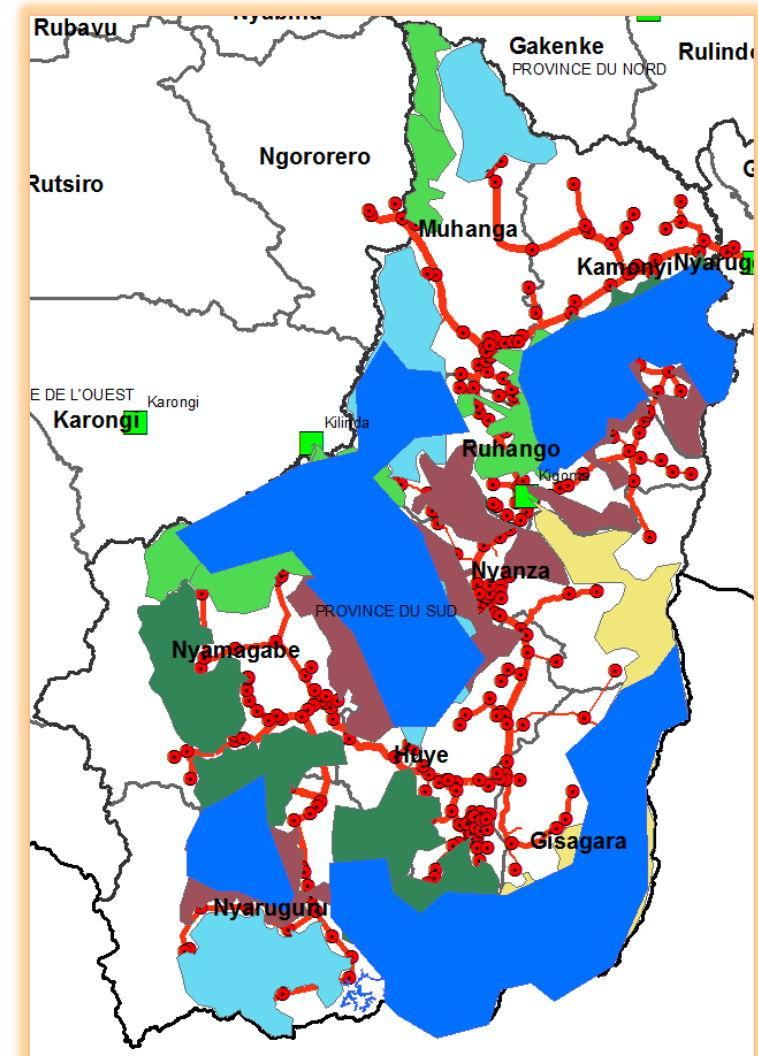
- Electricity Access Roll-Out Program connects various types of customers
 - Households (target 1.5m by 2017)
 - Businesses (target 100%)
 - Schools / administrative offices (target 100%)
 - Water pumping stations.
- Connect customers to electric grid

Evaluation Questions

- What is the benefit to households from getting access to electricity?
- What businesses are created or expanded due to electricity access, and what is the total gain in business activity in connected areas?
- How much does access to electricity increase the use and quality of services such as health, education and administrative centers?

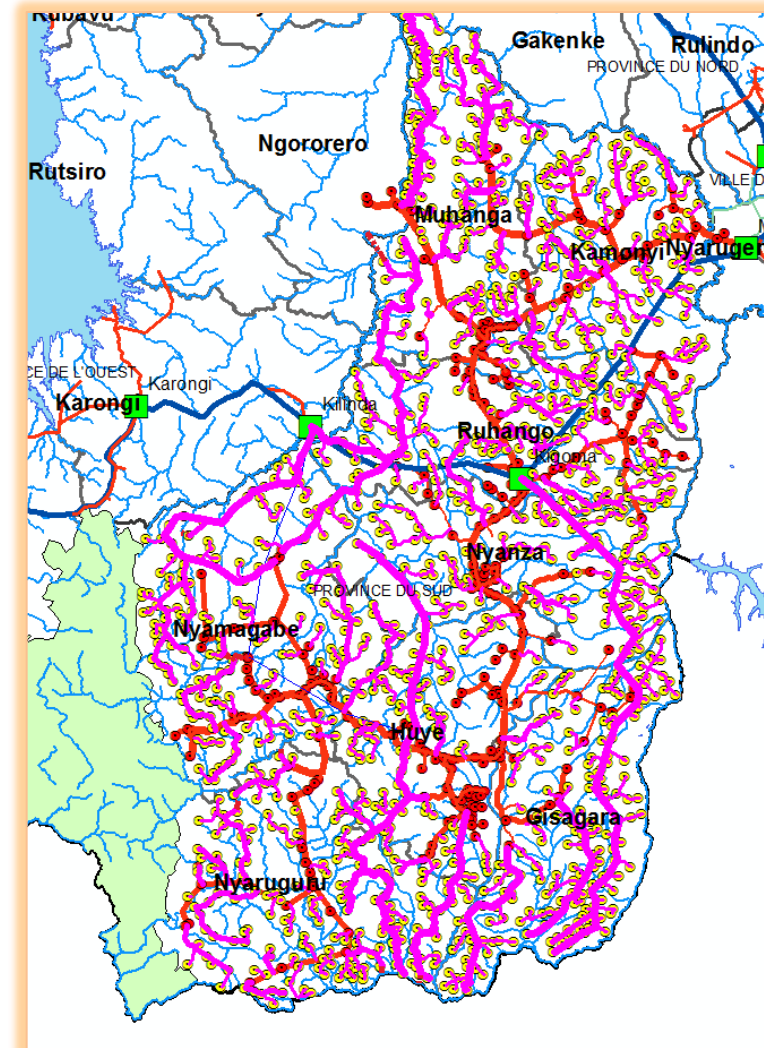
Evaluation Design

- Productive use
 - Longer-term outcomes
 - More scope for spillovers
- Difference-in-differences
 - Compare areas reached and not reached, before and after the program
 - Area (sub-zone) impact for group of settlements based on rollout plan



Evaluation Design

- Households
 - Shorter-term outcomes
 - Less scope for spillovers
- Hybrid design
 - DD: Compare households in settlements reached and not reached, before and after the program
 - Randomize settlements at the margin of being reached



Sample and data

- Data collection
 - For Pure household activity, based on areas to be reached and not be reached by program in next 5 years
 - Productive uses : Small (milling, carpentry) and medium enterprises(tea factory)
 - ❖ Water pumping for irrigation,
 - For health centers, schools and administrative centers